

### PRODUCT

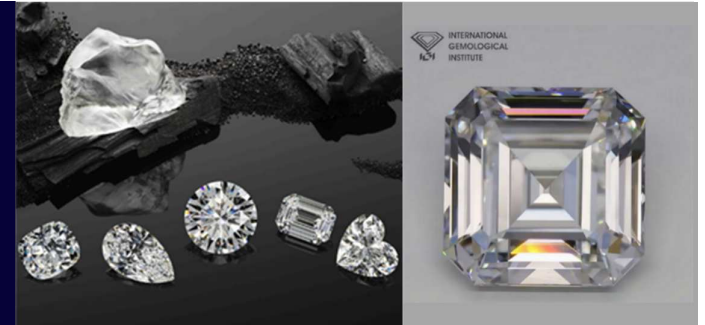
#### Diamonds for Jewellery Industry

All diamonds shapes are based on **three faceting styles**

- Round brilliant
- Step cut
- Princess cut

LMJ used for:

- Cutting rough diamonds
- Girdle bruting for fancy shapes



### CHALLENGE

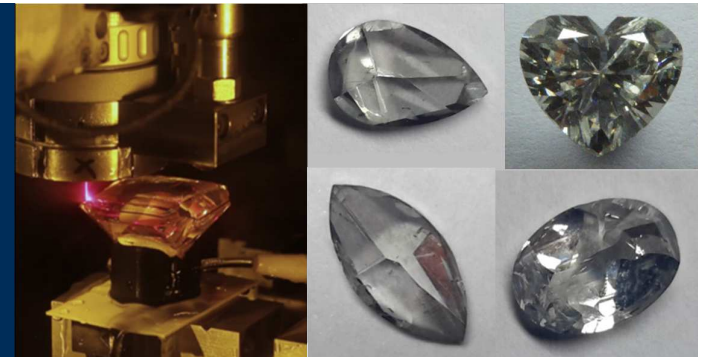
#### Perfect shape cut on very expensive and highly valuable diamonds

Main processing criteria:

- Perfect cut at the outline of the diamond to create the shape profile
- Cut different thicknesses according to the diamond shape
- Smooth surfaces and minimum of damages

Machining technologies able to reach these criteria:

- Dry laser
- Laser MicroJet (LMJ) - water jet guided laser technology



### SOLUTION

#### Perfect straight cuts, production-proven process, higher yield

LMJ advantages versus Dry Laser:

- Lower weight loss due to parallel cut
- No diamond damages
- Smoother surfaces with little post-processing
- Higher precision allows cut close to the final profile

Installed machine type:

- 1 x DCS 300
- 100 W green laser



DCS 300

Up to 10 cm / 4"